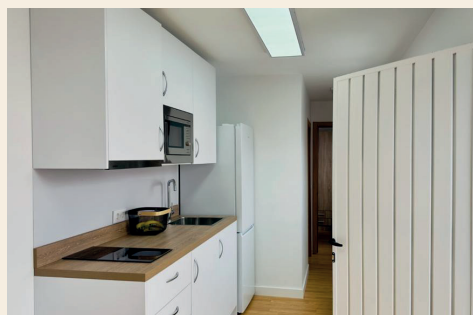


20/40 ft. Emergency Container



Description

- A house made using a recycled 20/40ft. shipping container
- Thermal insulation in walls and ceiling.
- Interior walls and ceiling with cardboard/gypsum panels.
- Windows with white aluminum frames.
- Metal door.
- Special exterior paint.

Electrical Installation

- Single-phase 220V with a main control panel and protection.

Plumbing Installation

- Tap water inlet.
- Blackwater outlet.
- Greywater outlet.

Kitchen

- Double-door overhead cabinet, countertop with a sink and single-handle faucet, and double-door base cabinet.
- 80L refrigerator
- 2-burner ceramic hob
- Extractor hood
- 80L electric water heater.

Bathroom

- Vinyl tile flooring and wall finishing.
- Shower tray 100x70cm.
- Shower enclosure.
- Toilet.
- Vanity cabinet.
- Mirror.
- 80L electric water heater.

Living/Bedroom

- Wooden bunk bed with 90x200 cm beds.
- Wooden double-door wardrobe with drawers, 100x198 cm.
- Folding wing table 67/124x75 cm.
- Auxiliary table, white, 55x45 cm.
- 32" television.

More information: www.grupoeurogaza.com

